

# Turnlock 300



The Turnlock 300 belongs to the perimeter security products of Boon Edam and offers an optimal security control for outdoors and indoors. This high security product is appropriate for both inside and around a building and matches any surrounding environment because of its neutral stainless steel finishing.

The Turnlock 300 has a compact and transparent design. The curved walls are made from stainless steel tube

frames. The mechanism has a dust cover and the canopy can be equipped with a water-resistant top cover. This is a curved shaped top of tinted polycarbonate mounted on top of the standard canopy.

The Turnlock offers continuous access in the same direction for authorised persons. Access control is possible in two directions, however not simultaneously.

The Turnlock 300 has three door wings creating an optimal comfort zone to pass through with small luggage. The Turnlock 300 is available as a single or double unit, where two Turnlocks will be integrated into one tube frame unit.

# Turnlock 300

## Technical Specifications

### Capacity

15 passages per minute.  
Bi-directional

---

### Material

Entire unit of tube frame is finished with 1.5 mm brushed stainless steel, AISI 304 or AISI 316.

Tube frame doorset; mirror finished stainless steel.

---

### Weight

Single model: 400 kg  
Double model: 700 kg

---

### Fail-Safe/ Fail-Secure

The Turnlock 300 is standard equipped with a fail-safe system, which electrically unlocks the mechanism. Optionally the mechanism can be made fail-secure.

---

### Power supply

230 VAC, 50 Hz  
Usage 24 V

---

### Power consumption

Single model: 30 Watt  
Double model: 60 Watt

---

### Power failure

On power failure, the fail-safe or fail-secure mode will be activated.

---

### Operation

No standard activation device included. Options include remote control, an external pedestal with push button, or adjustments for integration of a card reader.

### Installation

The Turnlock is delivered in one piece. Two rings on top of the canopy can be used for lifting the unit. The additional top cover is delivered separately. An U-shaped beam is set into the floor, to support the construction. The cables go through this beam and the tubes of the frame up to the canopy. For installation under an existing shelter 500 mm distance to the canopy is needed.

---

### Service and maintenance

Service and maintenance is possible through the top of the canopy. The bearings of the mechanism are lubricated for life.

---

### Optional accessories

- An external pedestal or support on the outside of the unit with luminous pictogram display. A green arrow and red cross in three modes; continuous, intermittent or progressive.
  - An external pedestal or support on the outside of the unit with adjustments for integration of a card reader subject to the measurements and characteristics of the reader.
  - An external push button or remote control to control the passage through the Turnlock.
  - A console with an 8-digit programmable unit to control the number of passages.
  - An additional water-resistant top cover of polycarbonate glazing.
- 

### Certificating

The Turnlock 300 is CE certified.  
Certificate N° 11335CSE.006 (EN 61010-1 (1993), +A2 (1995)).

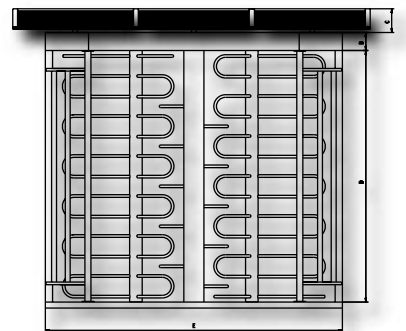
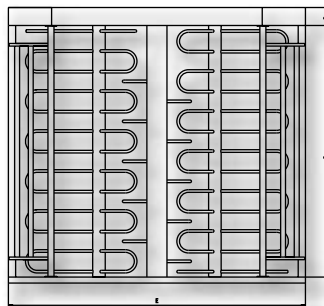
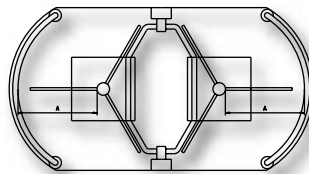
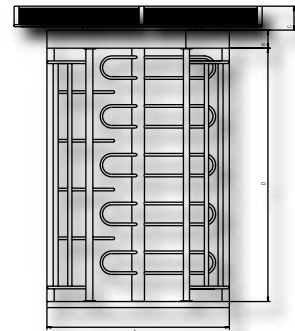
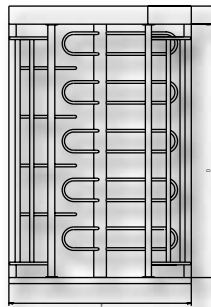
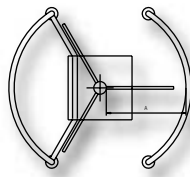
### Working principle

The user can be authorised via an access control system for example a card reader or an external control panel. Once authorisation is given, the mechanism unlocks for a rotation of 120°. By pushing one door wing of the door set, access is given to one person. Afterwards the door set is locked in the starting position again. A second person can simultaneously authorize and enter the Turnlock.

In case of a power failure, when equipped with electromechanical control, the Turnlock 300 can optionally either unlock the mechanism to freely rotate or stay locked to create a fail-secure situation.

The following working principle modes are possible in each direction:

- Free access;
- Free access with counting of passages;
- Access closed mechanically;
- Access closed electronically, with unlocking in case of the rigid arm;
- Access closed with electronic opening via card or ticket reader, coin or token selector, push buttons and/or control switches.



### Dimensions drawing and table

		Turnlock 300-S	Turnlock 300-D
<b>A</b>	Passage width	700 mm	700 mm x 2 passages
<b>B</b>	Canopy height	150 mm	150 mm
<b>C</b>	Extra top cover height	370 mm	370 mm
<b>D</b>	Height under canopy	2100 mm	2100 mm
<b>E</b>	Overall width	1500 mm*	2460 mm*

\* Placed next to a wall; 30 mm extra space needed for installation

# Turnlock 300



**Turnlock 300 features:**

- High security perimeter control
- Appropriate for both inside and around a building
- Bi-directional security passage
- Neutral stainless steel finishing
- Fail-safe with free rotation



.....  
*Distributor*