



## Unique high capacity revolving door

Our Twintour is a unique revolving door concept with an unprecedented passage capacity. The Twintour provides a bi-directional, straight-line access and easily accommodates large objects such as shopping and luggage trolleys, stretchers and wheelchairs. Combining the highest possible capacity and ease of use with maximum flexibility, we offer a modular revolving door concept allowing us to design a high capacity entrance that meet your requirements.

### Flexible concept

The Twintour is a flexible revolving door concept which consists of two or more 2-wing revolving doors that rotate at right-angles to one another thanks to the specially developed synchronous drive, ensuring the entrance is always draught proof.

### High capacity entrances

The variety of configurations enables us to offer you a high capacity entrance solution suitable for almost any building. You will often find our Twintour in airports, railway stations, hospitals, large office complexes, supermarkets and shopping centres.

# Flexible design

The Twintour has many options in design and surface finish and can be manufactured to match or complement a wide variety of interiors and facades.

## Finishing

The frame and door set can be finished in powder coated or anodised aluminium or the profiles can alternatively be clad with stainless steel, bronze, brass or other metal sheets.

## Construction

The curved walls are available in either solid or glazed versions. Solid walls are constructed from aluminium sandwich panels. Glass walls provide a spacious and transparent feel and consist of slim line aluminium sections with laminated glass. The door set is constructed from extruded aluminium sections, horsehair weather-strips around the edges and laminated or tempered safety glass. The canopy can have plywood, stainless steel or aluminium dustcovers. A waterproof membrane can be applied for external use if required. The ceiling consists of folded panels, supplied with sound insulating material. The corridor of the standard Twintour configuration can even include an air curtain if required.

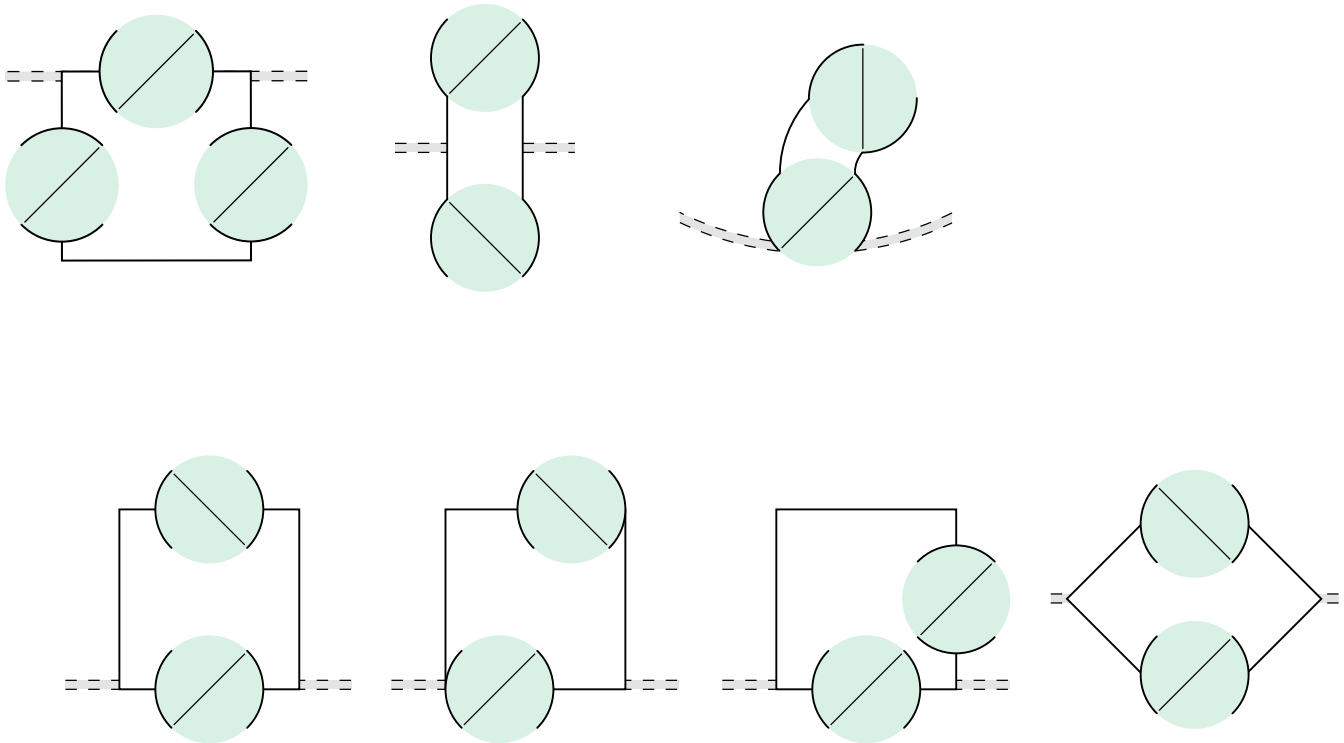
## Configurations

The Twintour is an exceptionally flexible concept that offers many possible entrance configurations. This variety of configurations allows us to design a customer made solution for your entrance.

## Options

- Night locking doors (manual and automatic)
- Electro-mechanical locking unit, capable of locking the door set in every position required by means of a push button
- Espagnolet lock
- Glass protection strips for trolleys
- Ceiling lighting with halogen or low energy lamps
- Push-button for the disabled (temporary low speed)
- Watertight roof
- OmniVent I, C or V (air curtains)
- Matting

*'Highest possible capacity with maximum flexibility'*



## Climate control

The Twintour creates the optimum solution to separate the outside and the inside of your building. A Twintour is open for people to pass through, but always closed to all the dirt, noise and weather outside. In this way you create and maintain a comfortable climate in your building.

### Cost savings

The Twintour is one of the most economical doors of the entire range of revolving doors in terms of the energy it consumes and the energy it saves. With a Twintour you will win floor space, because the space behind the Twintour can be used as well. In addition, you will save a lot of the energy that would be used on heating or cooling your building if you had a type of door that cannot be permanently 'closed'. By saving energy, you will save money. In many instances, a Twintour will pay for itself many times during its life span.

## Safety features

At Boon Edam, we put safety first. Our products comply with all relevant safety standards and regulations.

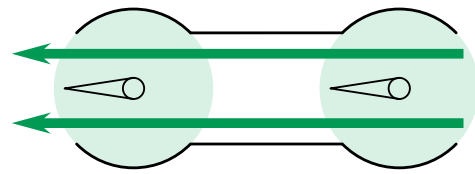
### User safety

The Twintour comes with a comprehensive array of safety features:

1. Compressible vertical safety buffers on the ends of the curved walls
2. Compressible horizontal safety buffers on leading face of the door wing bottom rails
3. Emergency stop buttons
4. Speed control
5. Additional non-contact sensors are available as an option for specific applications

### Emergency escape

The Twintour is equipped with a unique collapsible door set system (patented by Boon Edam), which unlocks in case of an emergency such as a fire alarm, power failure or an emergency stop. After deactivation of these locks, the door wings can be collapsed creating free access/egress.



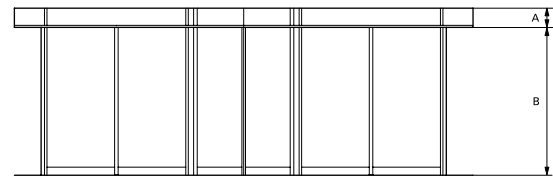
# Standard dimensions and theoretical capacity

D Diameter (mm)	C Throat opening (mm)	E Installation width (mm)	F Corridor length (mm)	Max persons/ segment	Capacity/ minute <sup>3</sup>	Type of traffic	Escape route	Disabled access
3000	2035	3077	750 <sup>1</sup> / 1500 <sup>2</sup>	10	2 x 60			
3200	2175	3277	800 <sup>1</sup> / 1600 <sup>2</sup>	11	2 x 61			
3400	2315	3477	850 <sup>1</sup> / 1700 <sup>2</sup>	13	2 x 68			
3600	2455	3677	900 <sup>1</sup> / 1800 <sup>2</sup>	14	2 x 70			
3800	2595	3877	950 <sup>1</sup> / 1900 <sup>2</sup>	16	2 x 75			

<sup>1</sup> Corridor Length is 1/4 D

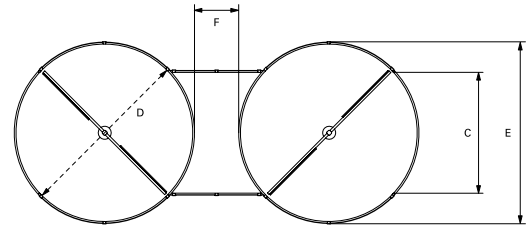
<sup>2</sup> Corridor Length is 1/2 D

<sup>3</sup> Maximum capacity per minute indicates how many people can pass through the Twintour in both directions



## Dimensions

	Height A (mm)	Height B (mm)
All Diameters	300-600	2200-2700



## Technical specifications

Power supply	200-240 VAC, 50/60 Hz
Motor	AC motor, 3-phase
Power consumption	
Operating	260W
Stationary	90W
Lighting	200W (halogen) 140W (low energy)
Ambient temperature	-20 °C to +50 °C
Fuse	External power supply fused with 16 A slow

## High quality

At Boon Edam, we take quality seriously. Quality of the materials we use, quality of our employees as well as quality of our partners. As with all Boon Edam products, the Twintour is manufactured to the highest standards, is CE approved and complies with the Machine Directive (98/37/EEC), the EMC-Directive (89/336/EEC) and the Low Voltage Directive (93/68/EEC).

Many Boon Edam revolving doors meet the requirements of the Dutch Council of the Chronically ill and the Disabled as being accessible for disabled people.



Distributor